



**Southside  
Animal  
Hospital**

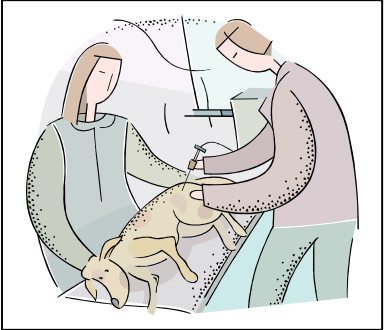
929 South Hill Street  
Griffin, GA 30224  
770-228-2595



## How To Care For Your Pet After Hematoma Drainage

Your pet has had a hematoma drained. This means that an incision was made into the inside of the ear and sutures were placed through the full thickness of the ear. This is a common procedure, but is surgery. For ideal healing, you must perform proper post-operative care. Recovery is usually uneventful, but occasionally complications occur. Doing the following things decrease the chance of complications.

**Monitoring the ear** You should monitor the ear for redness and swelling. The ear may drain a small amount of clear red fluid for a couple days. If it continues for more than a couple days, this is abnormal. If you see any white or creamy discharge from the incision, this is also abnormal. Alert us if you notice any of these complications.



**Medications** Be sure to follow the instructions on your medications carefully and to give them for the full time they are prescribed. They are to keep the ear from getting infected, and to treat the reason the hematoma occurred.

**Other Complications** Also monitor your pet for depression, vomiting, diarrhea, or not eating. Alert us if you notice any of these signs.

**Pre-Operative Blood Work**  
 Normal \_\_\_\_\_ Abnormal \_\_\_\_\_ Not Performed \_\_\_\_\_  
 Comments \_\_\_\_\_

**Sutures** Sutures need to be removed from the ear in 14 days.

**Pain Medicine** Your pet was given an injection after surgery to help control pain. You have been given medicine to help control pain for the next three days. Start the medication \_\_\_\_\_.

**Additional Comments** \_\_\_\_\_  
 \_\_\_\_\_  
 \_\_\_\_\_  
 \_\_\_\_\_